

TerraGrif™

by Mobasolar

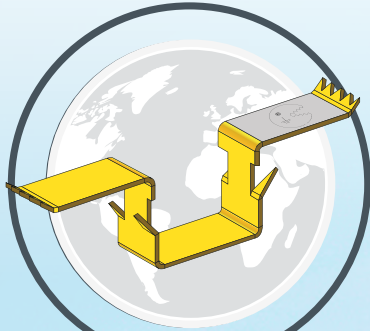
THE CATALOGUE



10 rue des Serruriers - 68600 Wolfgantzen - France
Tél : +33 3 89 41 35 96
mobasolar.com



HISTORY



1st major contract won:
The covered carpark
on the Renault French
production sites



2011

2012

2015

Creation
of the TerraGrif™.
The 1st patent is filed.



TerraGrif™ equips
the largest photovoltaic
power plant in Europe at
CESTAS near Bordeaux,
with 1m TerraGrif™



Following further technical
constraints, the TerraGrif™
is reinvented and a new
patent is filed.

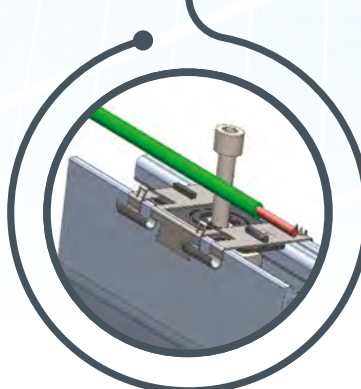


2018

2019

2021

TerraGrif™ is exported
all over the world



Developments
are still in progress...
for further innovations
to come!

TERRAGRIF™ SOLUTION

The purpose of the TerraGrif™ part is to bring about the equipotential bonding of the aluminum frame of the photovoltaic panels and the mounting system.

It is a spring steel part positioned between the photovoltaic panel and the mounting bracket, with specific teeth allowing the 2 different brackets to be gripped.

The TerraGrif™ part penetrates the non-conductive coating of the photovoltaic frame by destroying this layer of the frame.

This solution is patented (Publication No. WO 2012/123797).

→ Professional standards: which ones are they?

→ CEI 61730-2 (2004) + A1 (2011) :

Normative qualification framework for the operational safety of photovoltaic modules

→ IEC 60439-1 (2004) -§8.2.4.1 :

Earth continuity resistance measurement

→ NF EN 60068-2-11 :

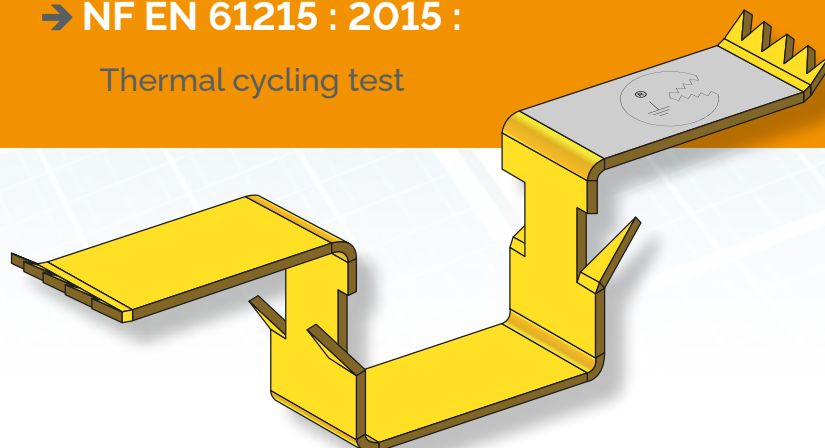
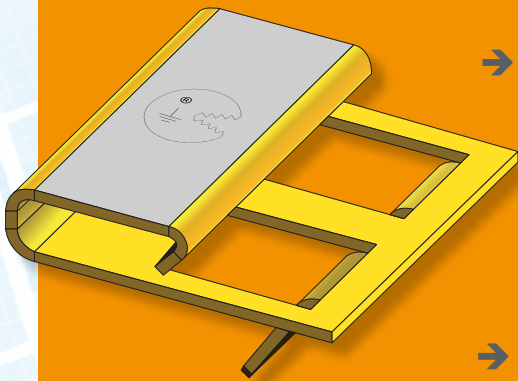
Salt spray test

→ NF EN 61180-1 :

Lightning test

→ NF EN 61215 : 2015 :

Thermal cycling test



ADVANTAGES



1 LCIE Veritas certificate and patented solution



2 Time saving



3 Easy



4 Economical



5 Compatibility with 90% of mounting systems



6 Robust



7 Safe



8 Carbon footprint



9 Recycling

→ Comparative TerraGrif™ estimations & conventional earthing

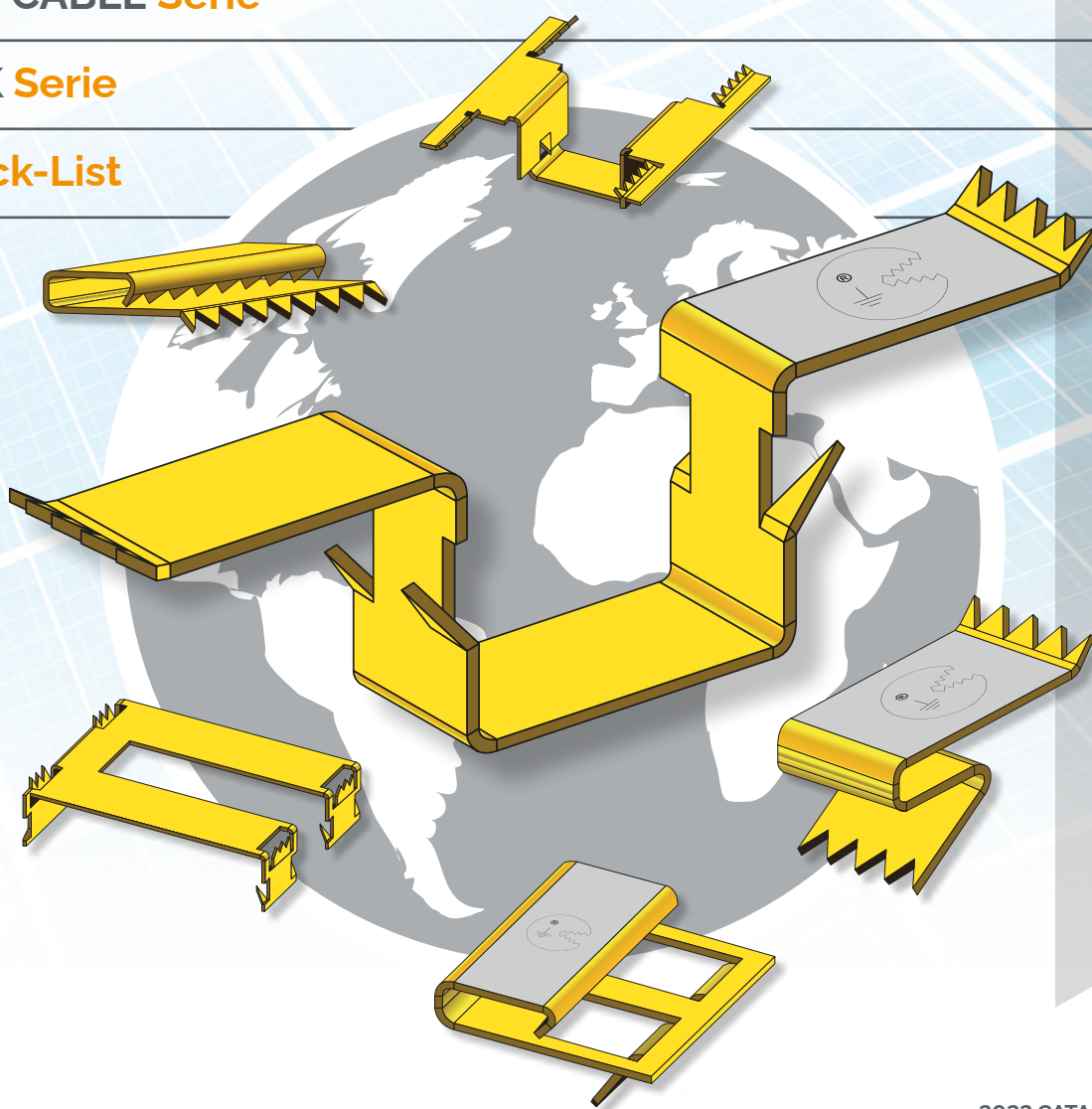
INDICATIONS	Standard installations	TerraGrif™	TerraGrif™
Quantity/M	1 per module	1 per module	1 for 2 modules
Quantity Modules	1000	1000	1000
Labour Installation/unit+cable	60 S	2 S	2 S
Labour Total installation	17 h	1 hr	1 hr
COST	Standard installations	TerraGrif™	TerraGrif™
Labour	250 €	€ 8	€ 4
Earthing element	700 €	€ 850	€ 500
Secondary earth cable	500 €	€ 0	€ 0
TOTAL	1450€	€ 858	€ 504
SAVING		€ 592*	€ 946
		41 %	65 %

- ✓ Quick and easy to install : a simple click and the TerraGrif™ part is installed
- ✓ No wiring
- ✓ No tightening
- ✓ Installed between the module and the mounting system from underneath. The photovoltaic panel will not be damaged due to the absence of stress and pressure: the panel warranty is honoured
- ✓ Installation and earthing effect over the long term
- ✓ Production and responsive logistics located in France

*Estimate

CONTENTS

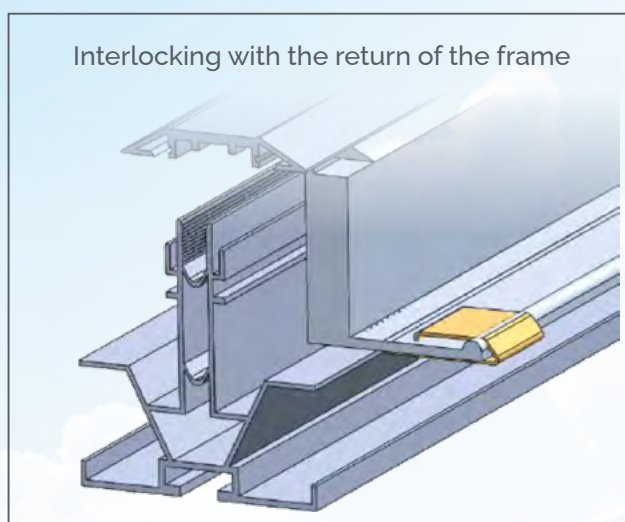
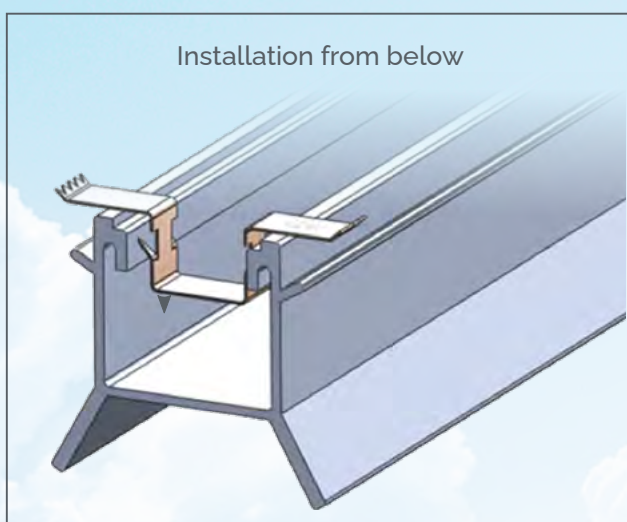
PL Serie	6
QL Serie	14
RL Serie	17
FIXO CABLE Serie	19
LINK Serie	20
Check-List	21



PL SERIE

Equipotential bonding solution between
the photovoltaic panel's frame
and the mounting system

→ Installing the TerraGrif™



MBS00173

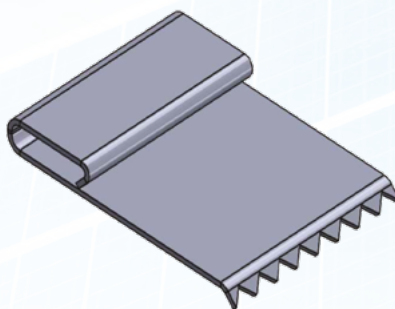
PL 0.5 x 20 x 17 - 2

MBS00174

PL 0.5 x 20 x 28 - 2

MBS00176

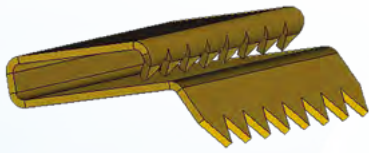
PL 0.5 x 10 x 20-2



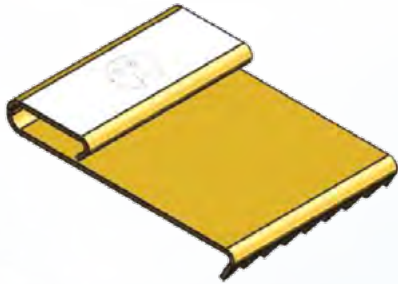
Patent No.: PAT. WO 2012/123797

"This document is the property of MOBASOLAR. It may not be reproduced or communicated without permission.
Documents, design, drawings and technical data are exclusive property of Mobasolar.
Partial or complete use of these items is prohibited.

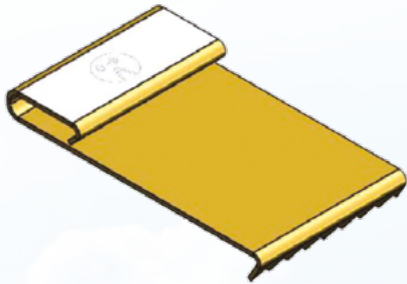
MBS00177
PL 0.5 x 20 X 14 - 5



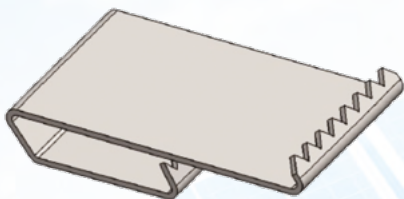
MBS00197
PL 0.5 x 20 x 25 - 3 / PH



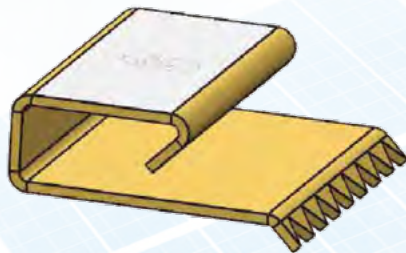
MBS00200
PL 0.5 x 20 x 32-3



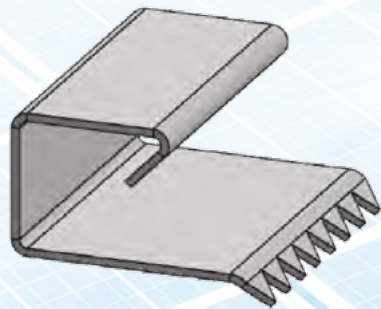
MBS00221
PL 0.6 x 20 x 31 / D V06



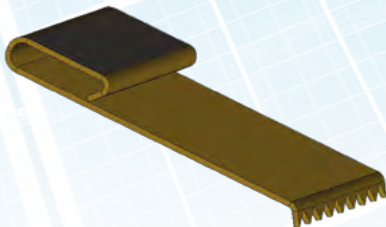
MBS00597
PL 0.6 x 20 x 17-4 / SPE



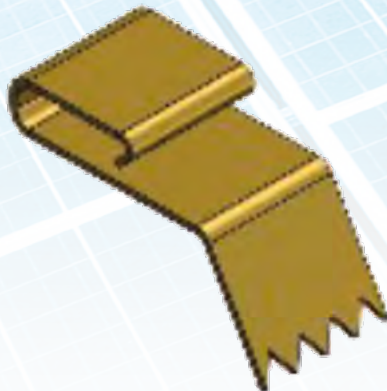
MBS00627
PL 0.5 x 20 x 16.4 / D



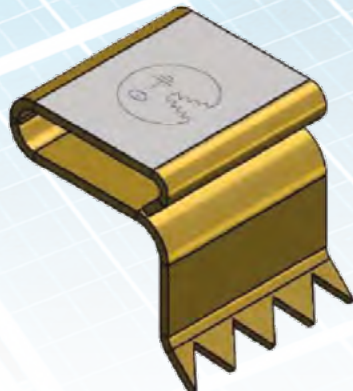
MBS002324
PL 0.5 x 20 x 30-2



MBS00180
PL 0.5 x 10 x 21-9

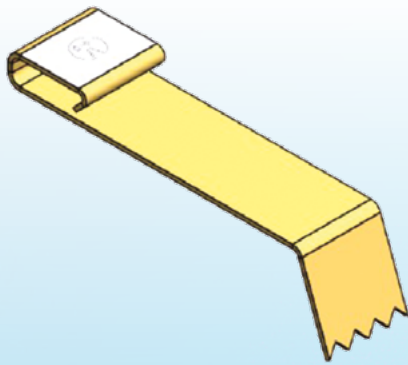


MBS00190
PL 0.5 x 10 x 11.8 / CP

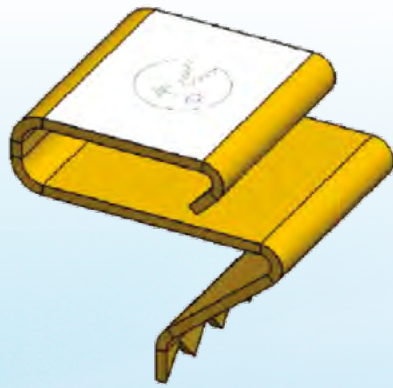


Patent No.: PAT. WO 2012/123797
 "This document is the property of MOBASOLAR. It may not be reproduced or communicated without permission.
 Documents, design, drawings and technical data are exclusive property of Mobasolar.
 Partial or complete use of these items is prohibited.

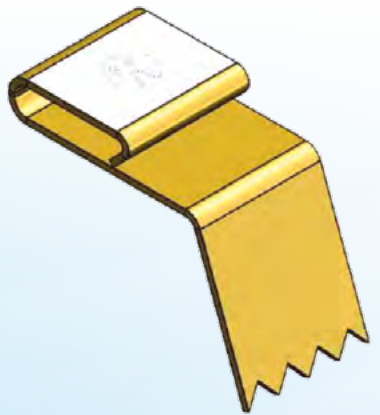
MBS00201
 PL 0.5 x 10 x 41 – SUNISO



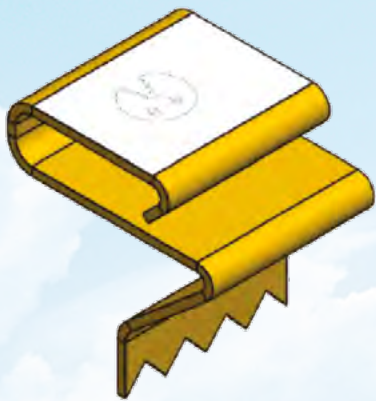
MBS00202
 PL 0.5 x 10 x 13-7.5 / UNIVERSAL



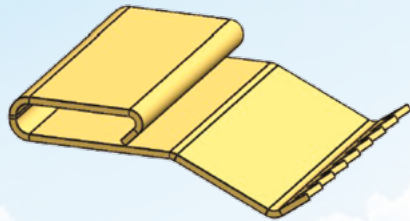
MBS00203
 PL 0.5 x 10 x 20 / BTB



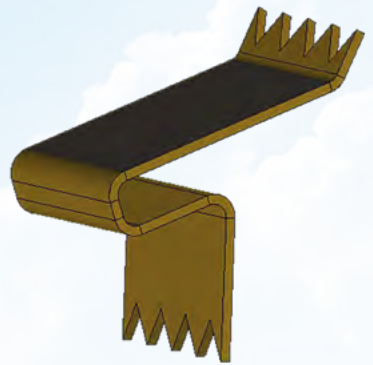
MBS00206
 PL 0.5 x 10 x 13-9.5



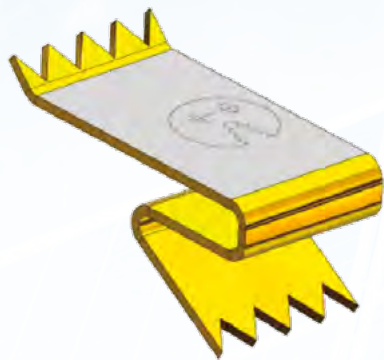
MBS00223
 PL 0.5 x 20 x 22.6 / ZM



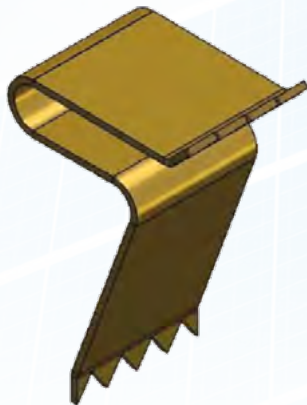
MBS00172
 PL 0.5 x 10 x 33 / T



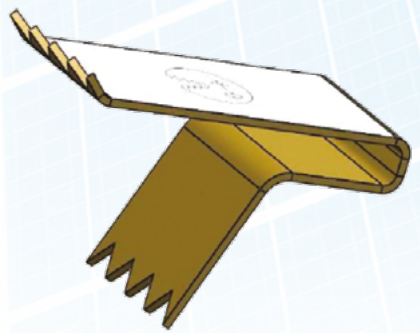
MBS00175
 PL 0.5 x 10 x 40 – 3 / S



MBS00181
 PL 0.5 x 10 x 18 / D

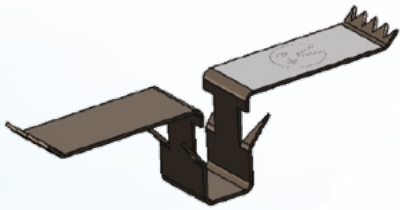


MBS00186
 PL 0.5 x 10 x 44 / HB

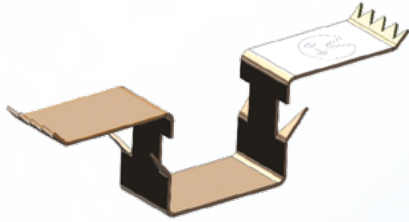


Patent No.: PAT. WO 2012/123797
 "This document is the property of MOBASOLAR. It may not be reproduced or communicated without permission.
 Documents, design, drawings and technical data are exclusive property of Mobasolar.
 Partial or complete use of these items is prohibited.

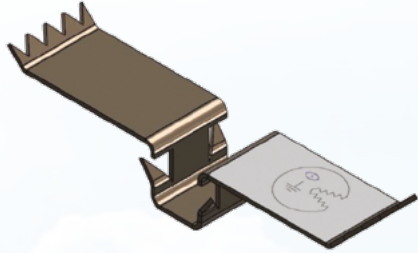
MBS00183
PL 0.5 x 10 x 58 / SZ



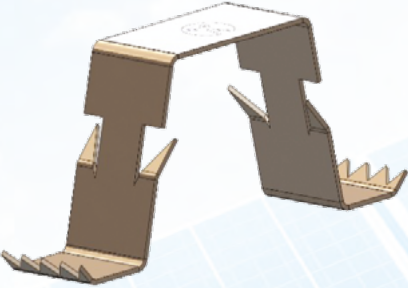
MBS00191
PL 0.5 x 10 x 59.7 / K2SZ



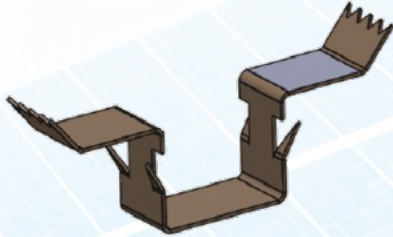
MBS00195
PL 0.5 x 10 x 47 / SZ-SUN



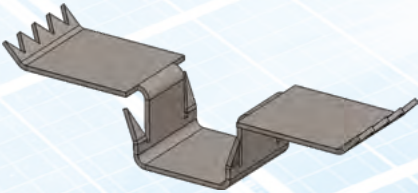
MBS00205
PL 0.5 x 10 x 49 / SZ I



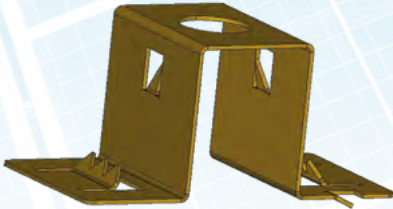
MBS00222
PL 0.5 x 10 x 60 ADDON



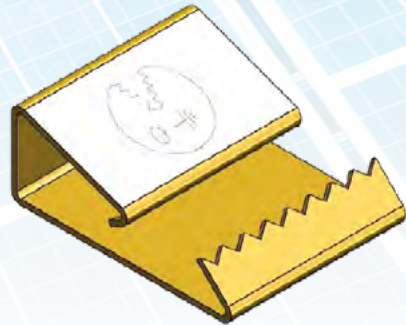
MBS02474
PL 0.5 x 10 x 41



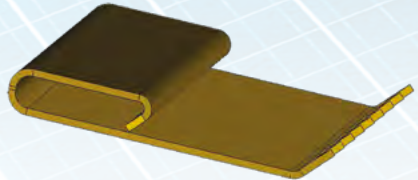
MBS02368
PL 0.5 x 20 x 41



MBS00182
PL 0.6 x 20 x 25 / BV



MBS00184
PL 0.5 x 20 x 23 - 3 - K

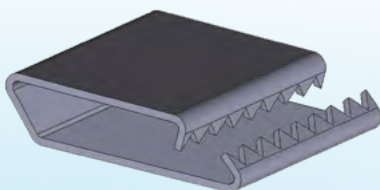


Patent No.: PAT. WO 2012/123797
 "This document is the property of MOBASOLAR. It may not be reproduced or communicated without permission.
 Documents, design, drawings and technical data are exclusive property of Mobasolar.
 Partial or complete use of these items is prohibited.

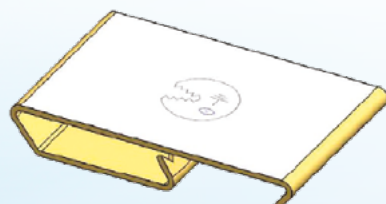
MBS00185
PL 0.5 x 20 x 28 / K



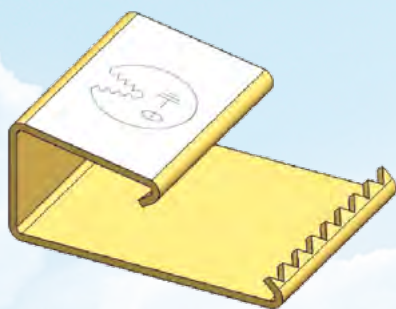
MBS00194
PL 0.6 x 20 x 21 / SDF



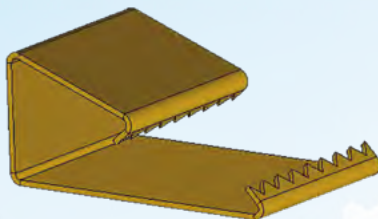
MBS00212
PL 0.6 x 20 x 31 / D-V05



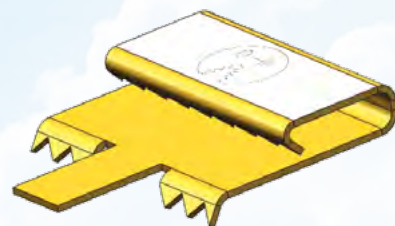
MBS00219
PL 0.7 x 20 x 25- 10



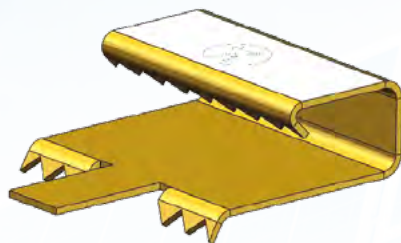
MBS01980
PL 0.6 x 20 x 31 / E



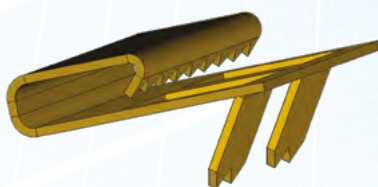
MBS00192
PL 0.5 x 20 x 17 - 2 - 8 UK-
MV3-MKR



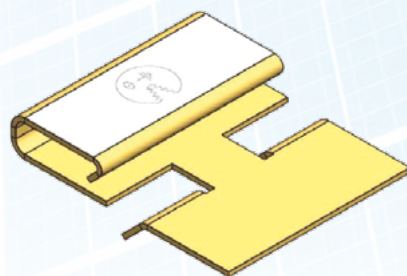
MBS00196
PL 0.5 x 20 x 24 - 5.5 / MVE



MBS00198
PL 0.6 x 20 x 18.5 / USZK-GP

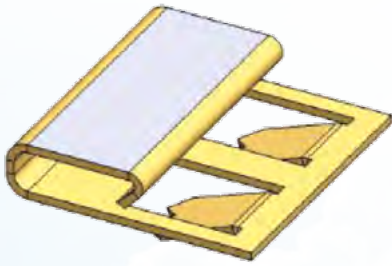


MBS00199
PL 0.5 x 20 x 24 / USZ K V09

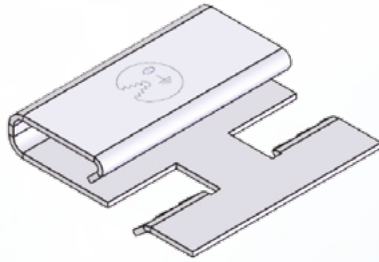


Patent No.: PAT. WO 2012/123797
 "This document is the property of MOBASOLAR. It may not be reproduced or communicated without permission.
 Documents, design, drawings and technical data are exclusive property of Mobasolar.
 Partial or complete use of these items is prohibited.

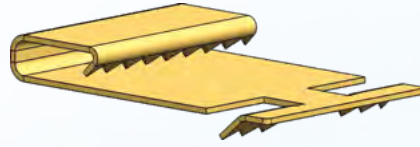
MBS00209
PL 0.6 x 20 x 18,5



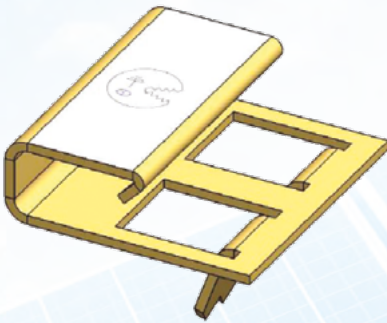
MBS00213
PL 0.5 x 20 x 19,5



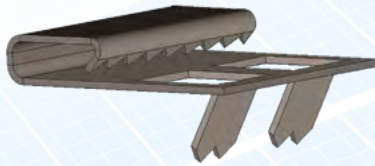
MBS02430
PL 0.5 x 20 x 28 UZK



MBS00220
PL 0.7 x 20 x 19-6 / TRUT



MBS01669
PL 0.6 x 20 x 23,5 - 120



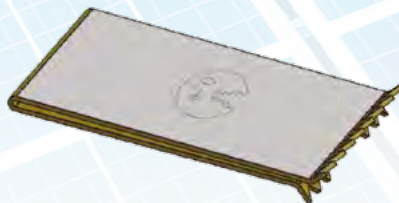
MBS00170
PL 0.5 x 10 x 30,8 / K2PA



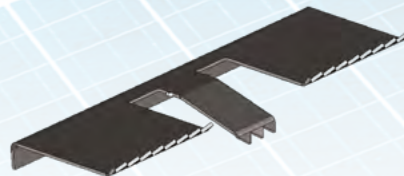
MBS00171
PL 0.5 x 10 x 25,8 / K2PO



MBS00189
PL 0.5 x 20 x 34 / UZ

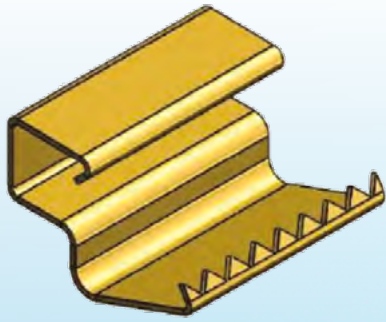


MBS00193
PL 0.5 x 60 x 22 ER-DUO

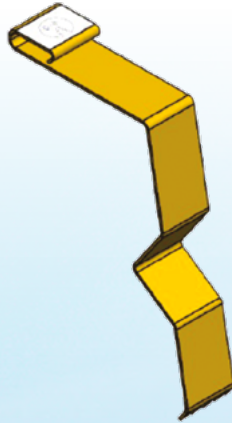


Patent No.: PAT. WO 2012/123797
 "This document is the property of MOBASOLAR. It may not be reproduced or communicated without permission.
 Documents, design, drawings and technical data are exclusive property of Mobasolar.
 Partial or complete use of these items is prohibited.

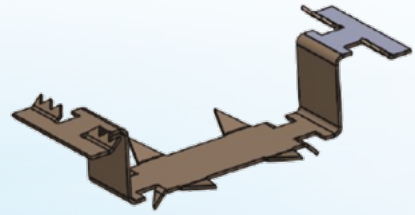
MBS00204
PL 0.5 x 20 x 19 / SC TS



MBS00210
PL 0.5 x 10 x 39 TSK-C



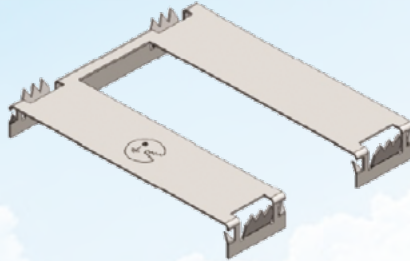
MBS00211
PL 0.5 x 20 x 82 R20 - DUO



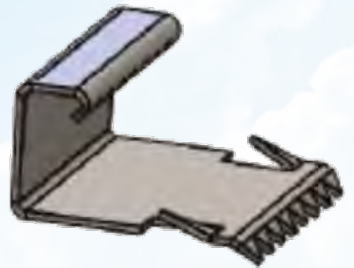
MBS00215
PL 0.5 x 40 x 35 / MINI



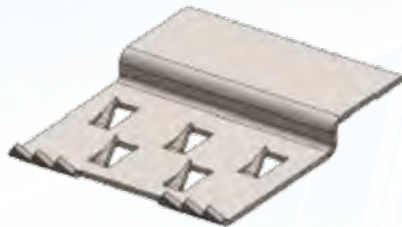
MBS00483
PL 0.5x40x53 / DUO



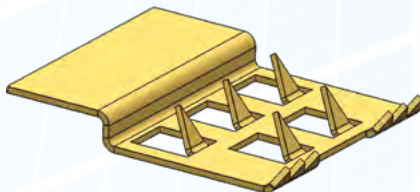
MBS01434
PL 0.5 x 20 x 17 - F



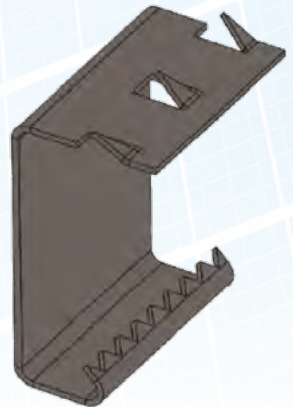
MBS01895
PL 0.5 x 20 x 24 / FS



MBS02449
PL 0.5 x 20 x 24-2



MBS01939
PL 0.6 x 20 x 26.5 / SIG



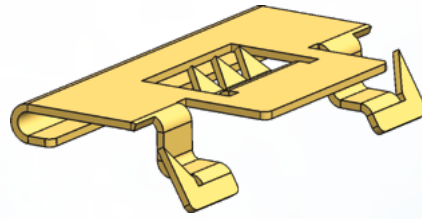
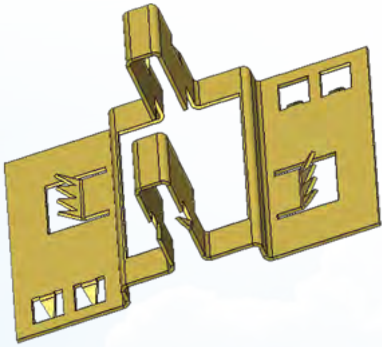
Patent No.: PAT. WO 2012/123797
 "This document is the property of MOBASOLAR. It may not be reproduced or communicated without permission.
 Documents, design, drawings and technical data are exclusive property of Mobasolar.
 Partial or complete use of these items is prohibited.

MBS02029

PL 0.5 x 48 x 35 - FIS

MBS02479

PL 0.5 x 25 x 15



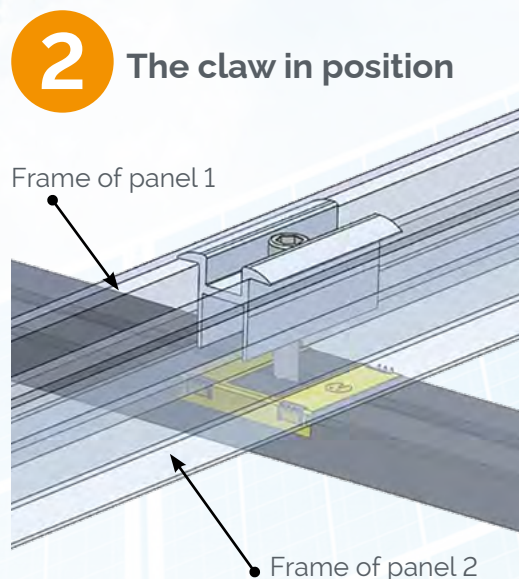
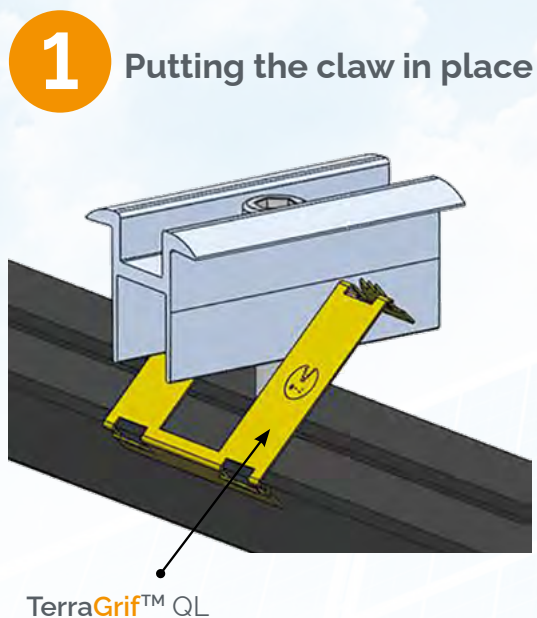
Patent No.: PAT. WO 2012/123797

"This document is the property of MOBASOLAR. It may not be reproduced or communicated without permission.
Documents, design, drawings and technical data are exclusive property of Mobasolar.
Partial or complete use of these items is prohibited.

QL SERIE

Equipotential bonding of two photovoltaic modules with one single TerraGrif™ part for a mounting system with fastening by means of flanges on rails

→ Installing the TerraGrif™

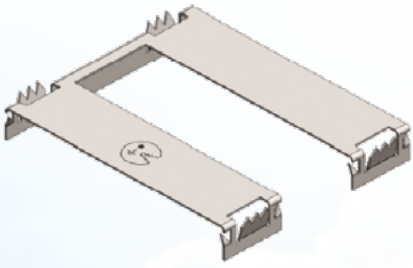


Width of the TerraGrif™ RL is variable from 20 to 65 mm

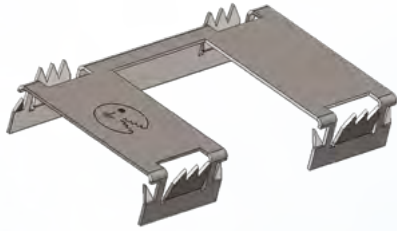
Patent No.: PAT. WO 2012/123797

"This document is the property of MOBASOLAR. It may not be reproduced or communicated without permission.
Documents, design, drawings and technical data are exclusive property of Mobasolar.
Partial or complete use of these items is prohibited.

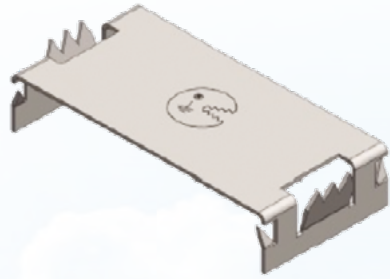
MBS01477
QL 0.5 x 52 x 60.5 - DUO



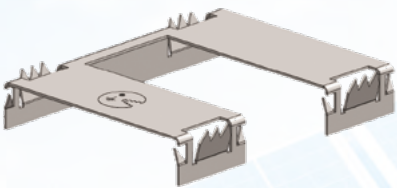
MBS01478
QL 0.5 x 52 x 27 - DUO



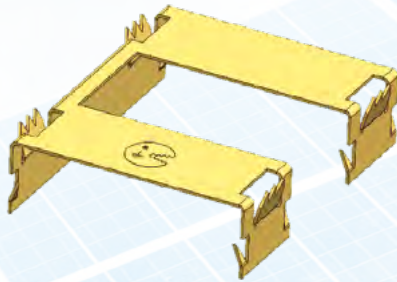
MBS01941
QL 0.5 x 20 x 40



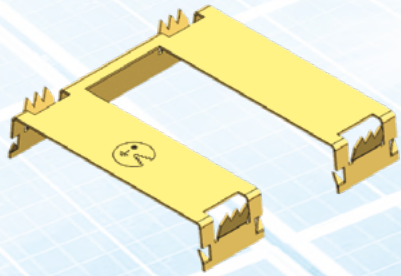
MBS01957
QL 0.5 x 52 x 40



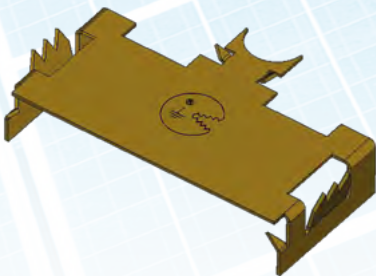
MBS02084
QL 0.5 x 52 x 40/B



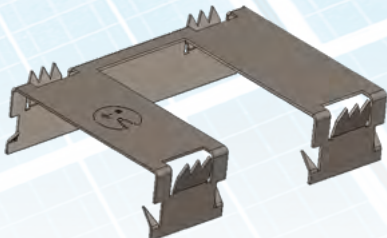
MBS02221
QL 0.5 x 52 x 50-l



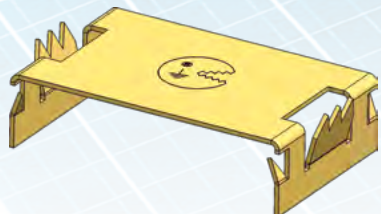
MBS02244
QL 0.5 x 27 x 42 - TRI



MBS02254
QL 0.5 x 52 x 34-B

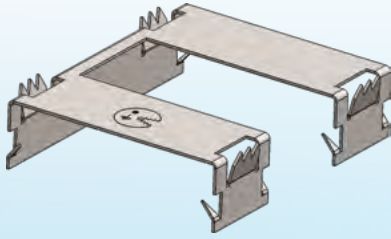


MBS02436
QL 0.5 x 20 x 32



Patent No.: PAT. WO 2012/123797
 "This document is the property of MOBASOLAR. It may not be reproduced or communicated without permission.
 Documents, design, drawings and technical data are exclusive property of Mobasolar.
 Partial or complete use of these items is prohibited.

MBS02493
QL 0.5 x 52 x 42/B



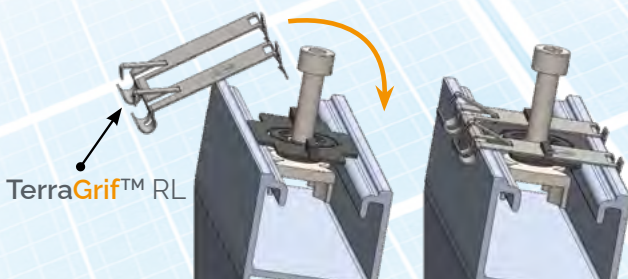
Patent No.: PAT. WO 2012/123797
"This document is the property of MOBASOLAR. It may not be reproduced or communicated without permission.
Documents, design, drawings and technical data are exclusive property of Mobasolar.
Partial or complete use of these items is prohibited.

RL SERIE

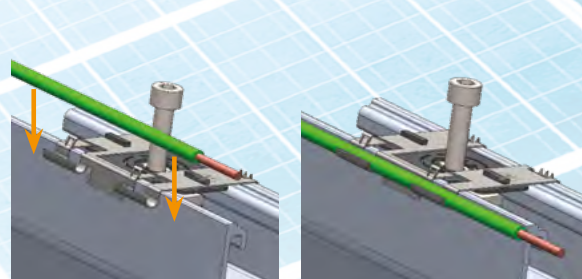
Equipotential bonding of two photovoltaic modules with one single TerraGrif™ part. Solution suited to mounting system with a discontinuous rail and mounting system on sealing

→ Installing the TerraGrif™

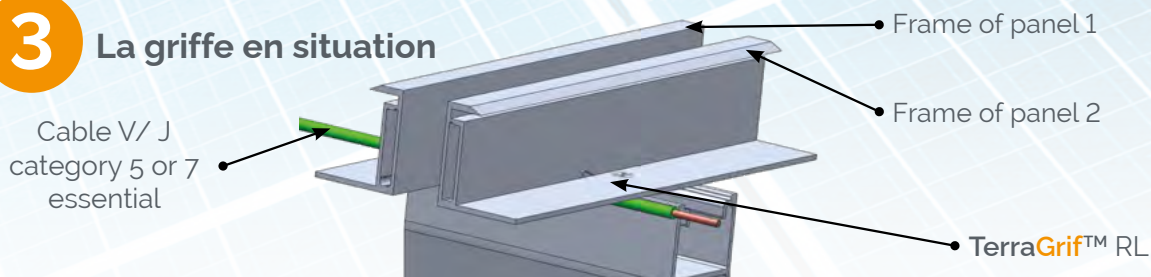
1 Putting the claw in place



2 Putting the cable in place



3 La griffe en situation

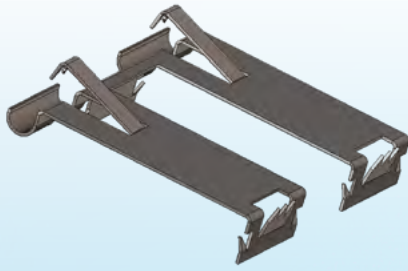


The width of the TerraGrif™ RL is variable from 20 to 65 mm

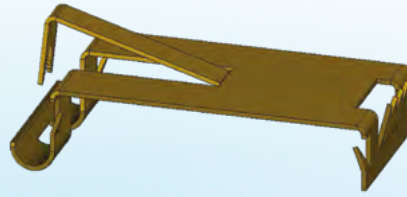
Patent No.: PAT. WO 2012/123797

"This document is the property of MOBASOLAR. It may not be reproduced or communicated without permission. Documents, design, drawings and technical data are exclusive property of Mobasolar. Partial or complete use of these items is prohibited.

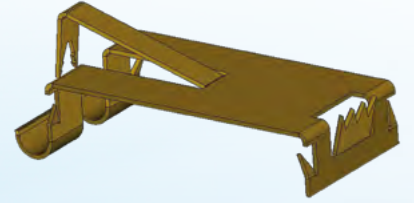
MBS01839
RL 0.5 x 52 x 40



MBS02217
RL 0.6 x 20 x 40



MBS02218
RL 0.6 x 20 x 48



Patent No.: PAT. WO 2012/123797
"This document is the property of MOBASOLAR. It may not be reproduced or communicated without permission.
Documents, design, drawings and technical data are exclusive property of Mobasolar.
Partial or complete use of these items is prohibited."

FIXO CABLE

SERIE

Fastening solution for long-term performance of electrical cables in photovoltaic power plants.

Unlike rilsans, this solution provides long-lasting performance and adapts to temperature variations.

MBS01199
MHQ1-2



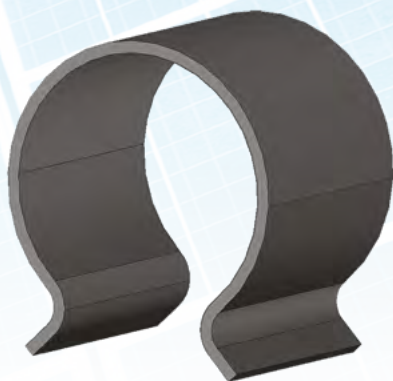
MBS01200
MHQ3-4



MBS01201
MHQ-GL01



MBS01401
BLOCABLE



Patent No.: PAT. WO 2012/123797

"This document is the property of MOBASOLAR. It may not be reproduced or communicated without permission.
Documents, design, drawings and technical data are exclusive property of Mobasolar.
Partial or complete use of these items is prohibited.

LINK

SERIE

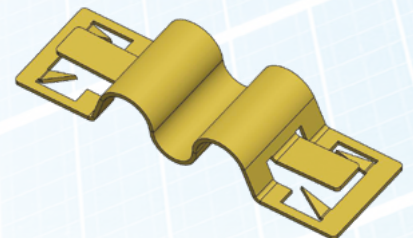
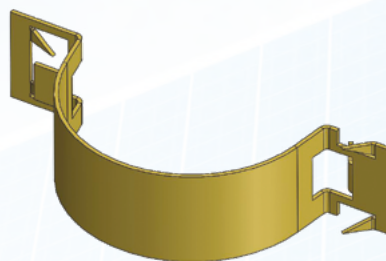
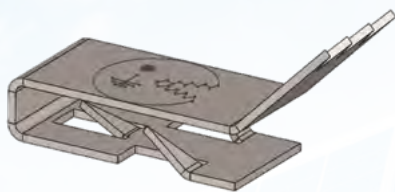
LINK, makes it possible to absorb a thermal or functional expansion gap between the conductive components by ensuring the equipotentiality.
Effectively replaces a braid for quasi-static parts.

MBS02066

PL 0.5 x 08 x 22-LINK

PR0.5 x 10 / 008-21

PR0.5 x 00 / 021-21



Patent No.: PAT. WO 2012/123797

"This document is the property of MOBASOLAR. It may not be reproduced or communicated without permission.
 Documents, design, drawings and technical data are exclusive property of Mobasolar.
 Partial or complete use of these items is prohibited.

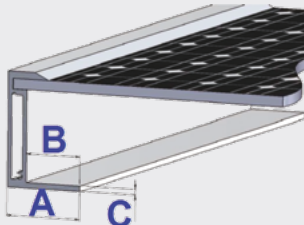
THE CHECK-LIST

Please enter the information in the table and send us the PDF files, in order to define the type of **TerraGrif™** best suited to your mounting system.

Company:.....

Contact:..... Email:.....

Tel:.....

TerraGrif™ CHECK-LIST	MOUNTING SYSTEM	PANELS
Manufacturer		
Reference		
Type		
Panel bracket drawing to be attached <i>(PDF file to be provided)</i>		
Mounting instructions <i>(PDF file to be provided)</i>		
Type of PV panel fastening		
Position of the PV panel on the mounting bracket (Portrait / Landscape)		
Is there a seal between the module and the mounting bracket?		
Number of PV modules		
Dimension of frame return A		
Dimension of frame return B		
Thickness of frame return C		
Drawing available ? <i>(PDF file)</i>		
Frame return with or without protrusion?		

TerraGrif™

by Mobasolar



**TerraGrif™ PRINCIPLE, WORLD LEADER
IN THE EARTHING OF PHOTOVOLTAIC PANELS!**

www.terragrif.eu or on www.facebook.com/Mobasolar/
or on www.linkedin.com/company/mobasolar/

10 rue des Serruriers - 68600 Wolfgantzen - France
Tél : +33 3 89 41 35 96
mobasolar.com

