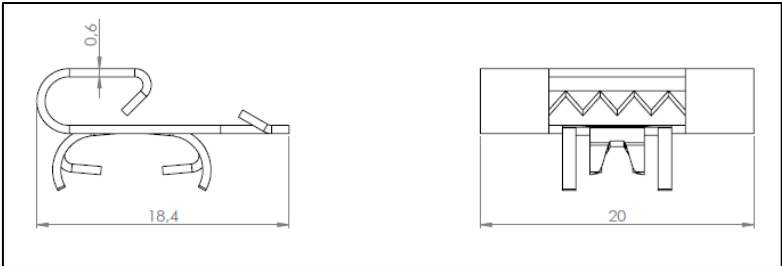


Terragrif® is an essential element for grounding photovoltaic systems, designed for efficient and secure installation. Its intuitive design allows it to be easily slipped over the module frame or support rail, significantly reducing installation time (CAPEX/OPEX). Despite its simplicity, it ensures a robust and reliable electrical connection, which is vital for overvoltage protection and the overall safety of the photovoltaic system.

GL 0.6 x 20 x 18 - 6



TECHNICAL SPECIFICATIONS

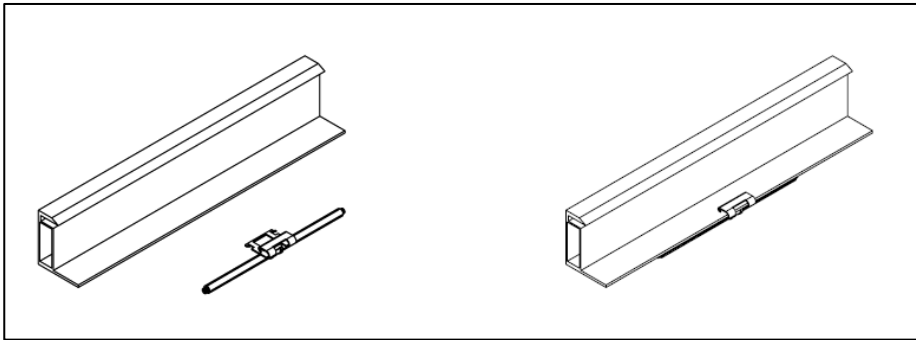
TERRAGRIF®

Reference	MBS02844
Type	1 Terragrif® / 1 PV module
Cable specification	6 mm² H07VK6
Material	301 Stainless steel
Weight	2,22 g
Packaging	Carton box GALIA - A13
Carrier bag - Quantity	Plastic bag 250 pcs

STANDARDS

Ground continuity test	IEC 61730-2
Lightning current wave test	IEC 61180
Salt mist test	IEC 60068
Climatic cycling	IEC 61215-2

IMPLEMENTATION



«This document is MOBASOLAR's property. It may not be reproduced or communicated without authorization»

CRIMPER TOOL FOR GRIPLINK



CRIMPER TOOL

Reference	MBS02844
Length	227 mm
Width	70 mm
Height	20 mm
Weight	531 g

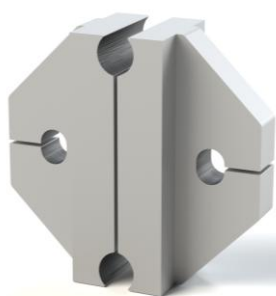
PACKAGING

A case containing a pair of jaws

UNIVERSAL CRIMPING JAWS

DESCRIPTION

This component can be purchased as an additional part for replacement



CRIMPING JAWS

Reference	MBS03165
Material	Steel
Length	30 mm
Width	18,25 mm
Height	15 mm
Weight	8,57 g